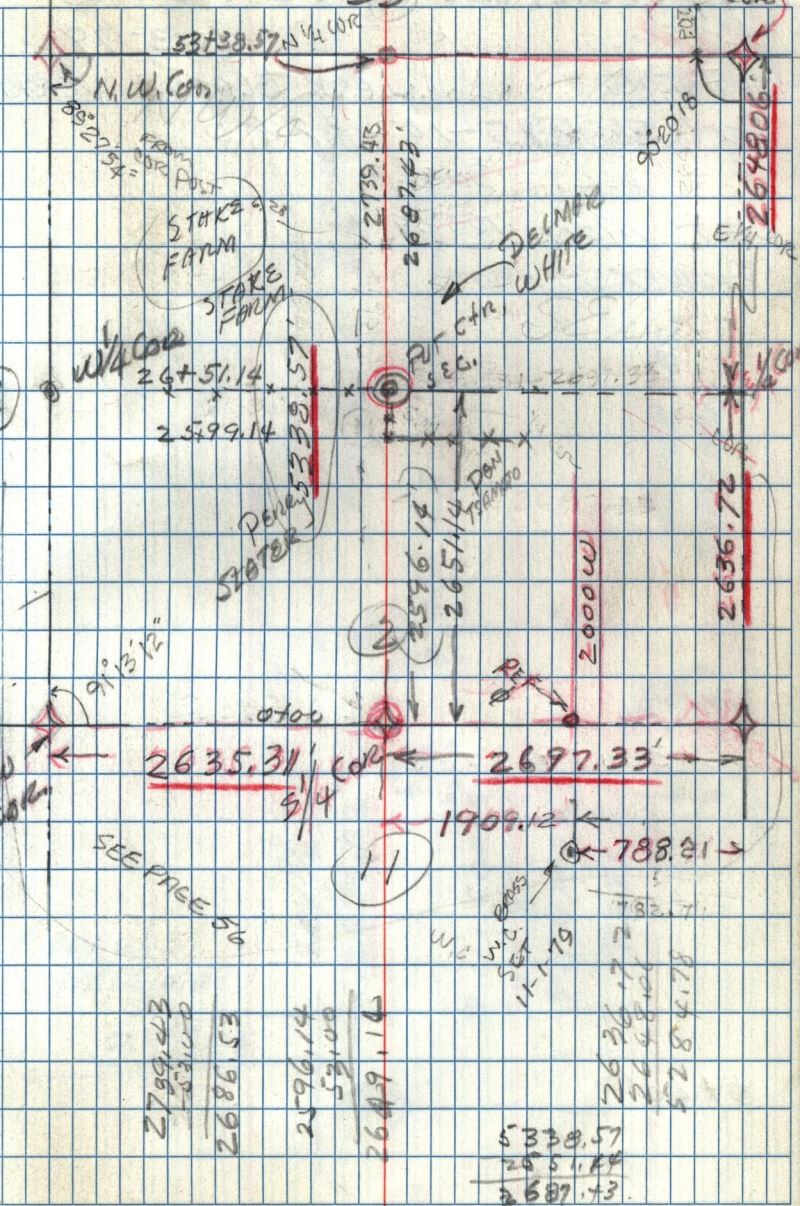


35



$\frac{2799.43}{521.00}$
 $\frac{2686.53}{}$

$\frac{2596.14}{521.00}$
 $\frac{2649.14}{}$

$\frac{5338.57}{2651.14}$
 $\frac{2687.43}{}$

$\frac{2636.72}{2648.06}$
 $\frac{284.78}{}$